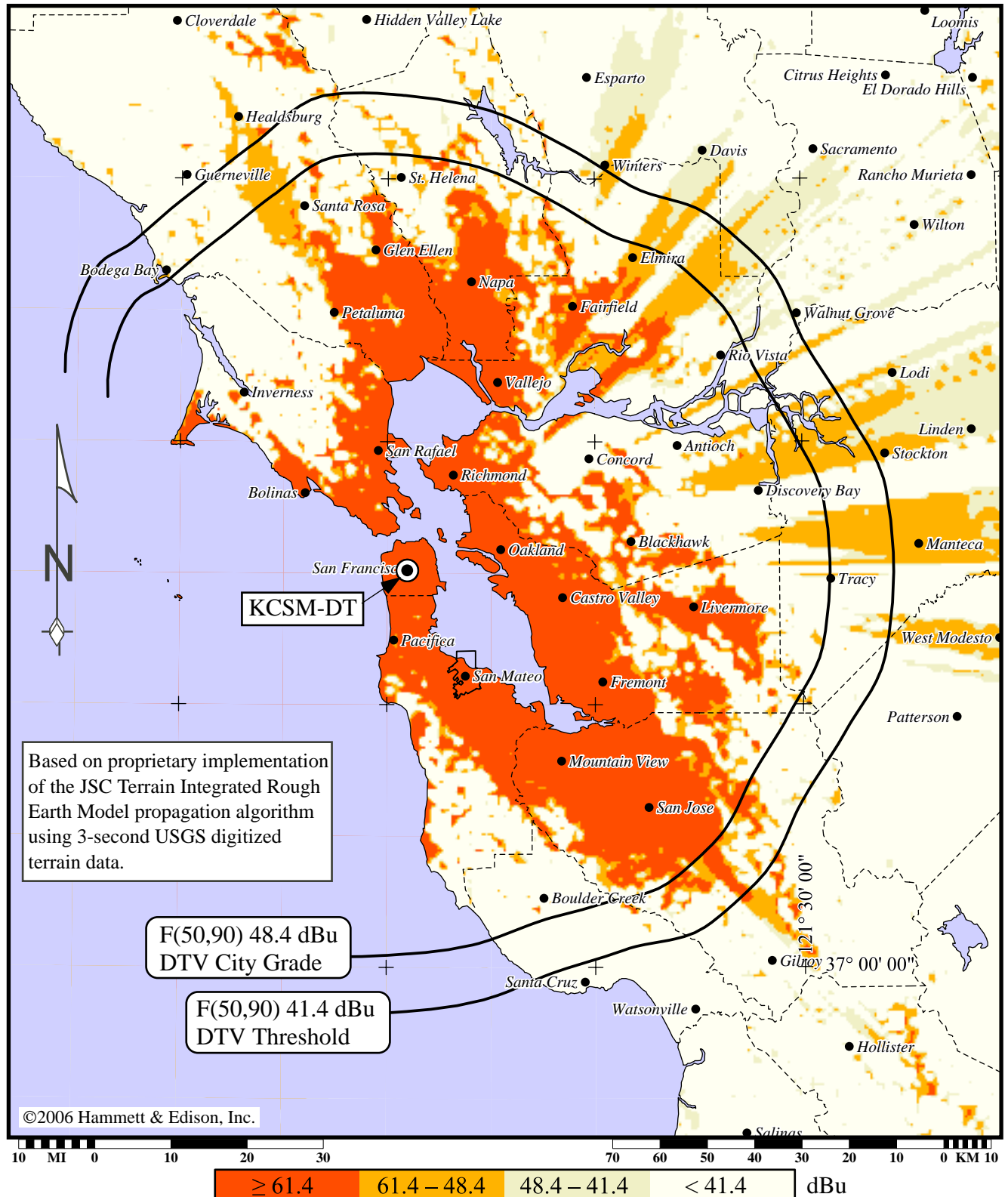


KCSM-DT • DTV Channel 43 • San Mateo, California

FCC Contours and Terrain-Sensitive Coverage
Licensed KCSM-DT, 536 kW ERP (DA)



Lambert conformal conic map projection. Map data taken from Sectional Aeronautical Charts, published by the National Ocean Survey. Geographic coordinate marks shown at 30-minute increments. City limits shown taken from U.S. Census Bureau TIGER/Line 2000 data.



KCSM-DT • DTV Channel 43 • San Mateo, California

**OET-69 Coverage Study for Licensed KCSM-DT: 536 kW ERP (DA)
Error Code 3 Ignored, Actual Elevation Pattern, and
Correctly Calculated Depression Angles**

OET-69 Coverage Analysis, 2000 Census
tvstudy v3.2.3

This interference study is based on 1.00 x 1.00 kilometer cells and terrain profiles with 10.0 points per kilometer. FCC processing using these finer-resolution parameters is hereby requested, pursuant to the Commission's August 10, 1998, Public Notice, "Additional Applications Processing Guidelines for DTV."

Longley-Rice errors ignored

Station record parameters:

	--Modified-----	--Original-----
Station:	D43 KCSM-DT LIC	D43 KCSM-DT LIC
City:	SAN MATEO, CA	SAN MATEO, CA
Facility ID:	58912	58912
Coordinates:	N 37-45-19.0	N 37-45-19.0
	W 122-27-06.0	W 122-27-06.0
Height AMSL:	459.2 m	459.2 m
Maximum ERP:	536 kW	536 kW
Azimuth pattern:	DIE-TUP-C3-8-1	DIE-TUP-C3-8-1
Orientation:	0.0	0.0
Elevation pattern:	kcsmd43elv.pat	OET-69 generic
Electrical tilt:	0.30	
Service level:	41.4 dBu	41.4 dBu

Interfering station	Total IX		Unique IX	
	Area,km2	Population	Area,km2	Population
D43 000717AB GNT SACRAMENTO, CA	1341.4	176,167	503.1	109,690
D43 KHSL-TV CP CHICO, CA	856.0	121,264	40.5	4,433
N42z KTNC-TV LIC CONCORD, CA	970.7	308,147	242.2	177,307
N43z KGMC CP CLOVIS, CA	338.1	47,898	36.6	6,815
N44- KBHK-TV LIC SAN FRANCISCO, CA	15.8	3,099	11.9	3,099

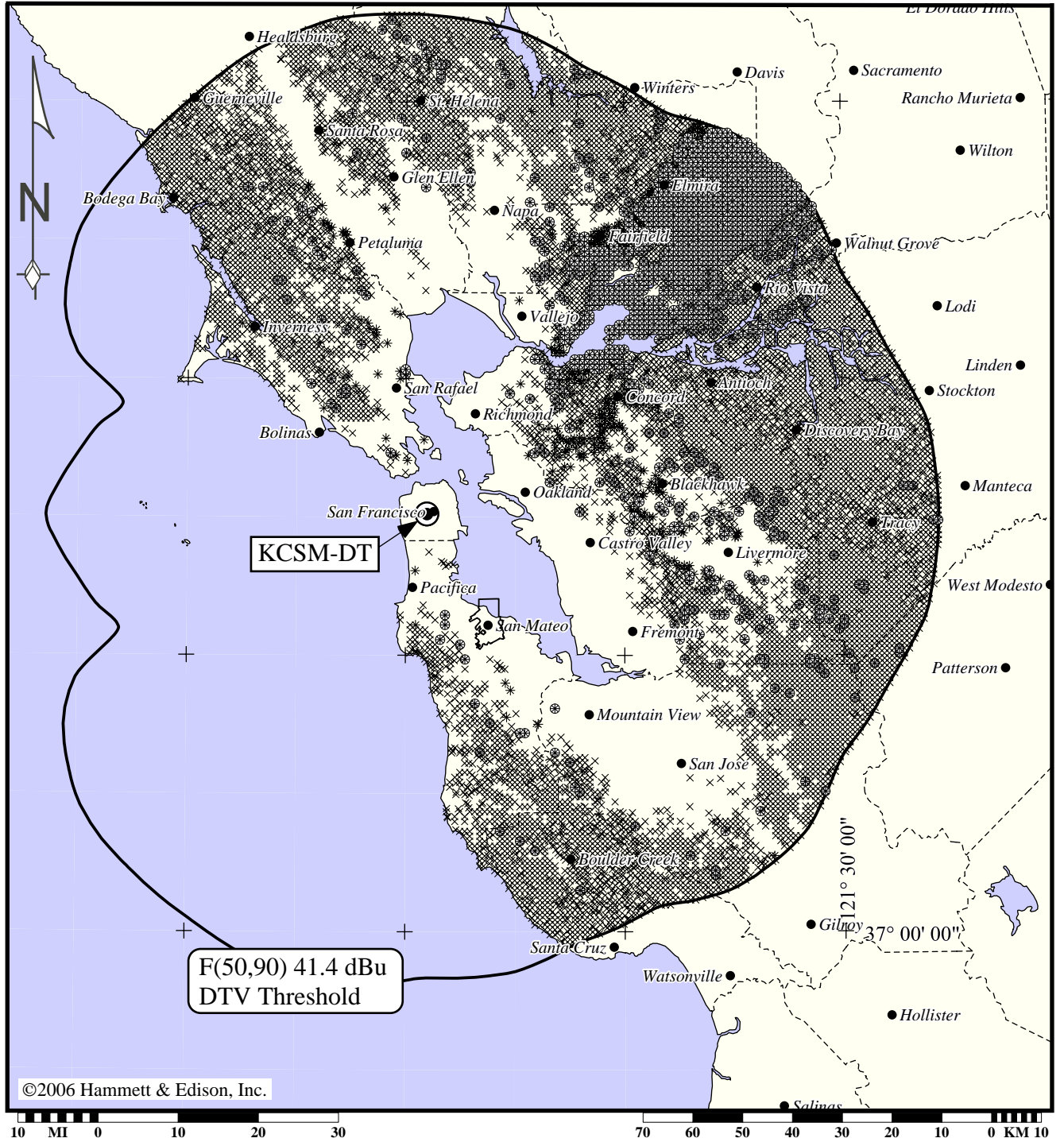
Service conditions	Area,km2	Population
Noise-limited service	16941.5	6,835,784
Terrain-limited service	7782.3	5,865,735
Interference-free service	6043.6	5,424,732

Note: The results of the OET-69 algorithm are dependent on the use of computer databases and complex software algorithms, which may vary between computer platforms and installations. Also, while Hammett & Edison, Inc. endeavors to follow official releases and established precedents on the matter, FCC policy on DTV analysis methods changes from time to time. Thus, the results of OET-69 interference and coverage studies are subject to change and may differ from FCC results.



KCSM-DT • DTV Channel 43 • San Mateo, California

OET-69 Coverage Study for Licensed KCSM-DT: 536 kW ERP (DA)
 Error Code 3 Ignored, Actual Elevation Pattern, and
 Correctly Calculated Depression Angles



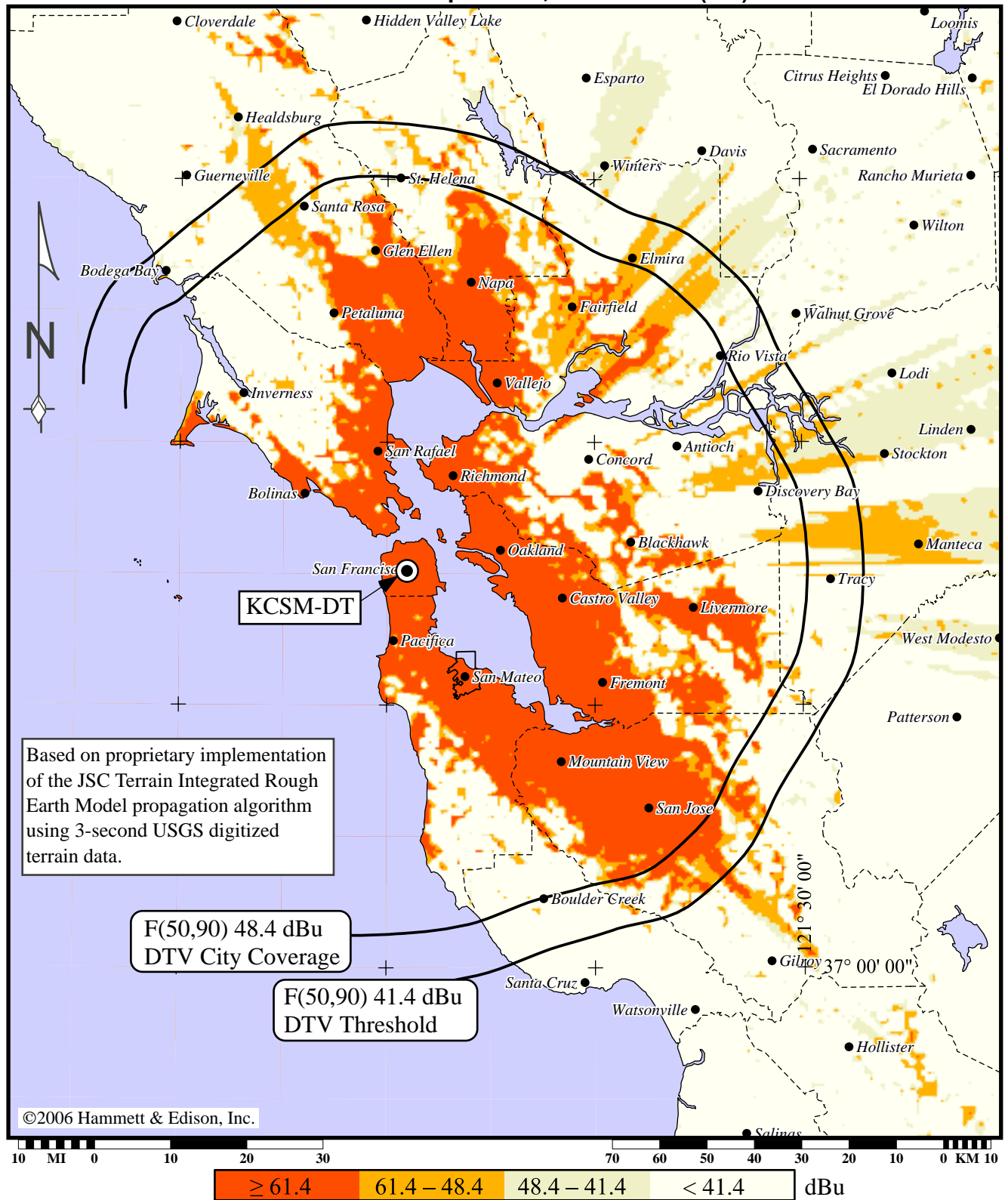
- × = No Signal (below threshold)
- * = Interference (with 2000 population in cell)
- ⊗ = Interference (without population in cell)

Lambert conformal conic map projection. Map data taken from Sectional Aeronautical Charts, published by the National Ocean Survey. Geographic coordinate marks shown at 30-minute increments. City limits shown taken from U.S. Census Bureau TIGER/Line 2000 data.



KCSM-DT • DTV Channel 43 • San Mateo, California

FCC Contours and Terrain-Sensitive Coverage
 HALF-POWER Operation, 238 kw ERP (DA)



Lambert conformal conic map projection. Map data taken from Sectional Aeronautical Charts, published by the National Ocean Survey. Geographic coordinate marks shown at 30-minute increments. City limits shown taken from U.S. Census Bureau TIGER/Line 2000 data.



KCSM-DT • DTV Channel 43 • San Mateo, California

**OET-69 Coverage Study for Half-Power KCSM-DT: 268 kW ERP (DA)
Error Code 3 Ignored, Actual Elevation Pattern, and
Correctly Calculated Depression Angles**

OET-69 Coverage Analysis, 2000 Census
tvstudy v3.2.3

This interference study is based on 1.00 x 1.00 kilometer cells and terrain profiles with 10.0 points per kilometer. FCC processing using these finer-resolution parameters is hereby requested, pursuant to the Commission's August 10, 1998, Public Notice, "Additional Applications Processing Guidelines for DTV."

Longley-Rice errors ignored

Station record parameters:

	--Modified-----	--Original-----
Station:	D43 KCSM-DT HALF POWER	D43 KCSM-DT LIC
City:	SAN MATEO, CA	SAN MATEO, CA
Facility ID:	58912	58912
Coordinates:	N 37-45-19.0	N 37-45-19.0
	W 122-27-06.0	W 122-27-06.0
Height AMSL:	459.2 m	459.2 m
Maximum ERP:	268 kW	536 kW
Azimuth pattern:	DIE-TUP-C3-8-1	DIE-TUP-C3-8-1
Orientation:	0.0	0.0
Elevation pattern:	kcsmd43elv.pat	OET-69 generic
Electrical tilt:	0.30	
Service level:	41.4 dBu	41.4 dBu

Interfering station	Total IX		Unique IX	
	Area,km2	Population	Area,km2	Population
D43 000717AB GNT SACRAMENTO, CA	988.5	138,450	385.5	65,320
D43 KHSL-TV CP CHICO, CA	591.1	77,362	31.6	1,258
N42z KTNC-TV LIC CONCORD, CA	779.0	280,035	177.9	134,238
N43z KGMC CP CLOVIS, CA	310.4	95,791	19.8	8,846
N44- KBHK-TV LIC SAN FRANCISCO, CA	20.8	2,586	12.9	1,544

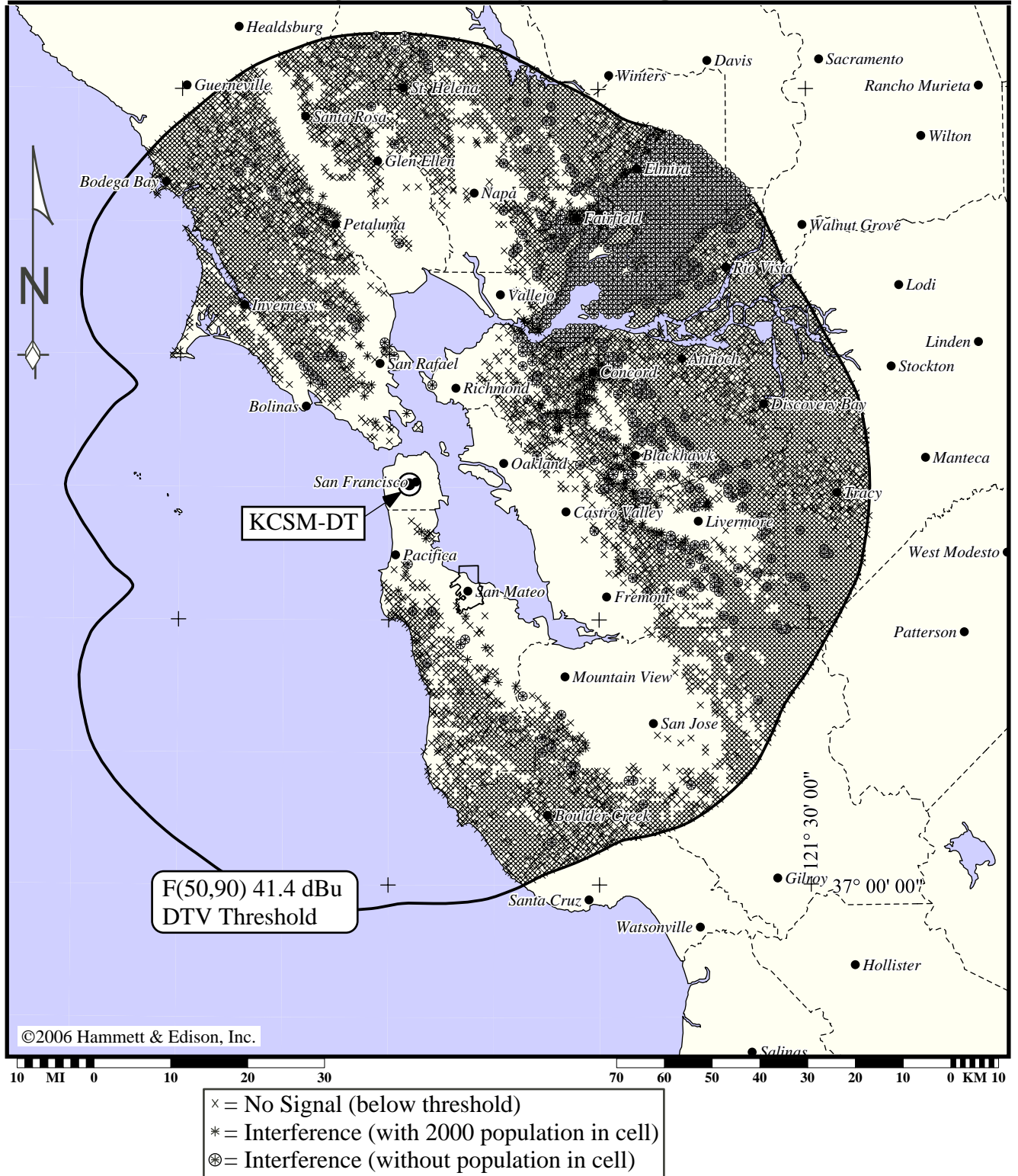
Service conditions	Area,km2	Population
Noise-limited service	15076.9	6,716,989
Terrain-limited service	6789.1	5,677,131
Interference-free service	5480.3	5,313,054

Note: The results of the OET-69 algorithm are dependent on the use of computer databases and complex software algorithms, which may vary between computer platforms and installations. Also, while Hammett & Edison, Inc. endeavors to follow official releases and established precedents on the matter, FCC policy on DTV analysis methods changes from time to time. Thus, the results of OET-69 interference and coverage studies are subject to change and may differ from FCC results.



KCSM-DT • DTV Channel 43 • San Mateo, California

OET-69 Coverage Study for Half-Power KCSM-DT: 268 kW ERP (DA)
 Error Code 3 Ignored, Actual Elevation Pattern, and
 Correctly Calculated Depression Angles



Lambert conformal conic map projection. Map data taken from Sectional Aeronautical Charts, published by the National Ocean Survey. Geographic coordinate marks shown at 30-minute increments. City limits shown taken from U.S. Census Bureau TIGER/Line 2000 data.

